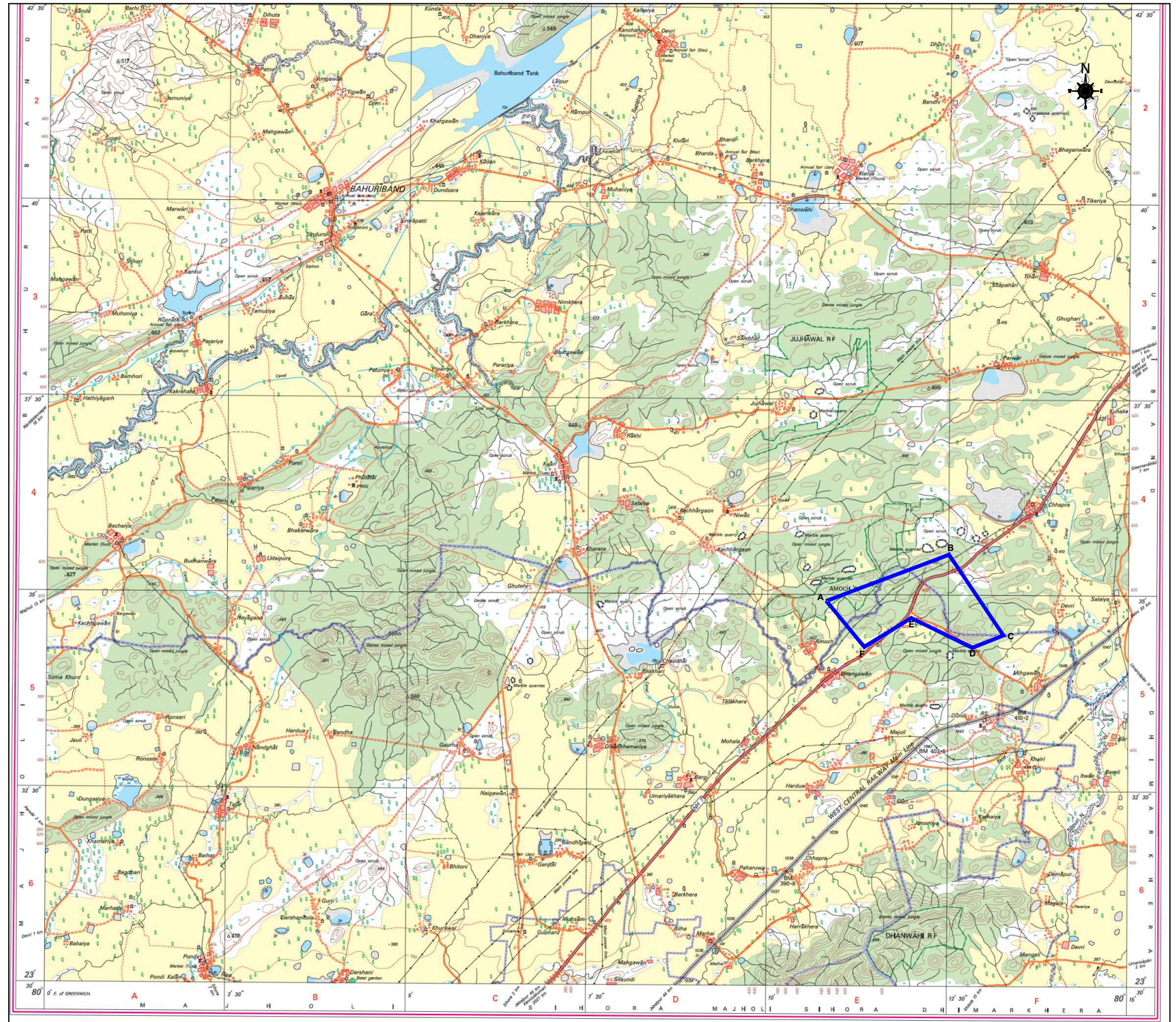


Amoch Chhapra block boundary



Sl. No.	Block Cardinal Points	Datum: WGS-84				RL
		Geographic (DD°MM' SS.SS")		UTM (Zone-44)		
		Latitude	Longitude	Easting (m)	Northing (m)	(m)
1	A	23° 34' 55.078" N	80° 10' 48.937" E	416354.328	2608185.012	433.436
2	B	23° 34' 19.974" N	80° 11' 20.688" E	417248.204	2607100.271	410.262
3	C	23° 34' 42.326" N	80° 11' 59.846" E	418362.078	2607781.461	416.536
4	D	23° 34' 19.586" N	80° 12' 50.689" E	419799.464	2607074.147	424.629
5	E	23° 34' 29.061" N	80° 13' 16.682" E	420537.866	2607361.492	417.498
6	F	23° 35' 31.012" N	80° 12' 30.821" E	419248.401	2609273.888	447.077

MINERAL EXPLORATION & CONSULTANCY LIMITED		
LOCATION MAP		
PRELIMINARY EXPLORATION (G3 STAGE) FOR IRON & BAUXITE IN AMOCH-CHHAPRA BLOCK (4.86 Sq.Km)		
DISTRICT : JABALPUR & KATNI		STATE : MADHYA PRADESH
PART OF TOPOSHEET NO:-64A/02		NOT TO SCALE
MECL/CHQ/EXPLORATION/MARCH-2024	PLATE NO. I	1